

# NW500

Non-Mydriatic Retinal Camera

Enhanced image quality in ambient light,  
even for eyes with small pupils.



# Next-generation fundus imaging offering bright and sharp images in well-lit conditions<sup>1</sup>, even in eyes with small pupils<sup>2</sup>.

Sharp, high-quality images  
Small pupils  
Easy to use  
Robotic



## OVERVIEW



Slit-scan technology to image through **small pupils** ( $\phi 2.0\text{mm}$  or larger<sup>3</sup>)



12MP sensor for **enhanced image quality**<sup>4</sup>.



**Automatic, rapid, one-touch** image capture



**Flexible positioning** against a wall/in a corner



**Compact design** fits into almost any exam setting



Wide variety of connectivity options for **seamless integration** and workflow<sup>5</sup>

1. A room with a brightness of 623 lux or less

2.  $\phi 2.0\text{ mm}$  or larger, tested on model eye

3. Confirmed with model eye

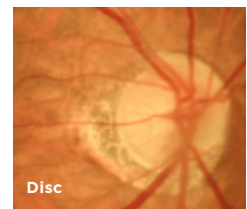
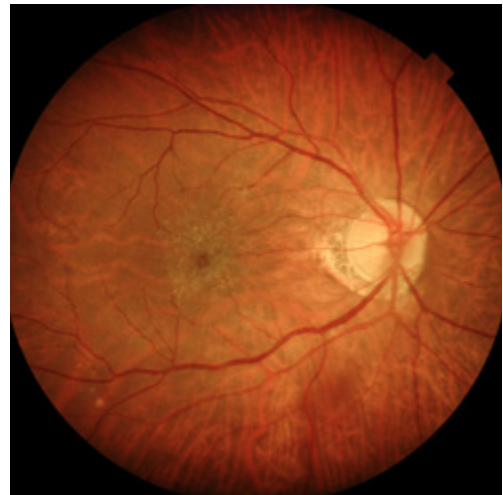
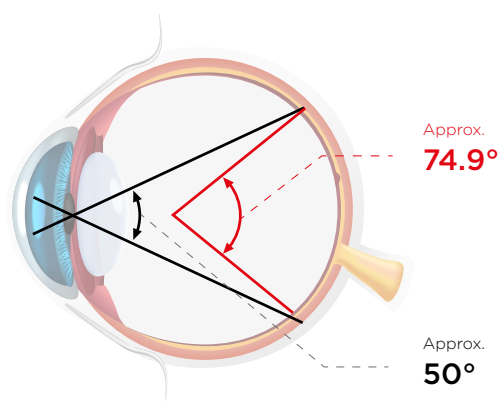
4. As compared to Topcon non-mydiatic retinal camera TRC-NW400

5. Multiple connections with Direct DICOM, Ez Capture, IMAGEnet\* 6, Shared folder and Direct Storage (USB/LAN)

## KEY FEATURES

### EXCELLENT QUALITY FUNDUS IMAGE

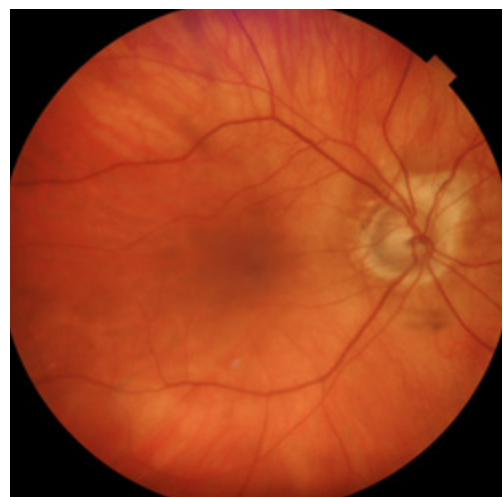
At an angle of view of 50 degrees (approx. 74.9 degrees at the spherical centre of the eye)<sup>6</sup>, the NW500 can capture a wider area than conventional models. Capable of capturing fundus images through a pupil diameter as small as 2.0mm, it provides sharp, detailed colour fundus images in dark and brightly lit rooms.<sup>1</sup>



*Epiretinal membrane  
Courtesy: Hanemoto Eye Clinic, Japan*

### INTRODUCING NEW SLIT-SCAN PHOTOGRAPHY

Innovative slit-scan illumination and rolling shutter mechanism in the NW500 produces excellent quality colour fundus images with less flare and shadow.<sup>4</sup> The slit-scan mechanism helps to overcome one of the known causes of poorly graded images with its ability to effectively image through small pupils. This innovative technology also helps the NW500 capture sharp, high-quality fundus images, regardless of miosis and the lighting conditions, unlike conventional fundus cameras.



*Eye with cataract, pupil size:  $\phi 2.0\text{mm}$   
Courtesy: Silicon Valley Eyecare Optometry and  
Contact Lenses in Santa Clara, CA*

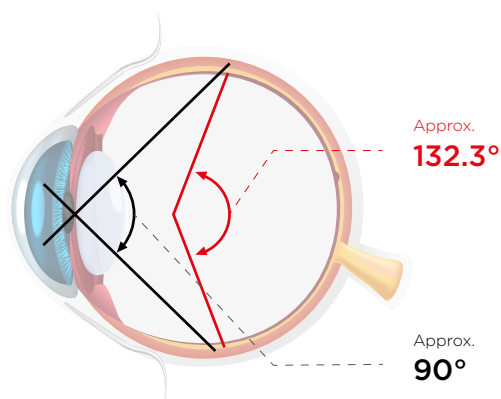
6. Xincheng Yao, Devrim Toslak, Taeyoon Son, Jiechao Ma. Understanding the relationship between visual-angle and eye-angle for reliable determination of the field-of-view in ultra-wide field fundus photography. *Biomedical Optics Express*, 2021 Sep 30;12(10):6651-6659.

Small pupil  $\Phi 2.0\text{mm}^2$   
Wide  $50^\circ$  field of view



### PANORAMIC WIDE-FIELD PHOTOGRAPHY<sup>7</sup>

In peripheral photography mode, up to 9 internal fixation positions are available to shoot peripheral areas, making it possible to create a wide panorama image with an approx.  $90^\circ$ -degrees (approx.  $132.3^\circ$  degrees at the spherical centre of the eye) angle of view.



### BILATERAL 2-FIELD PHOTOGRAPHY

After capturing the optic nerve head, the fixation target automatically moves to the macular position and captures continuously. The NW500 allows users to confidently and smoothly shoot fundus images at different fixation positions without the need for intermediate previews.



<sup>2</sup>  $\Phi 2.0$  mm or larger, tested on model eye

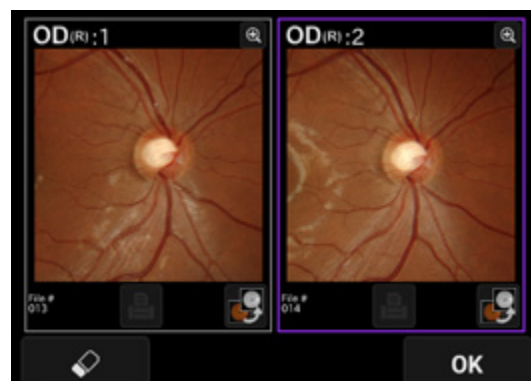
<sup>7</sup> IMAGEnet® 6 is required to generate panoramic images.



## FEATURES

### STEREO PHOTOGRAPHY<sup>8,9</sup>

By displaying the left and right images side-by-side for stereoscopic viewing, it is possible to observe the shape and depression of the optic nerve head, as well as the state of compression and traction.

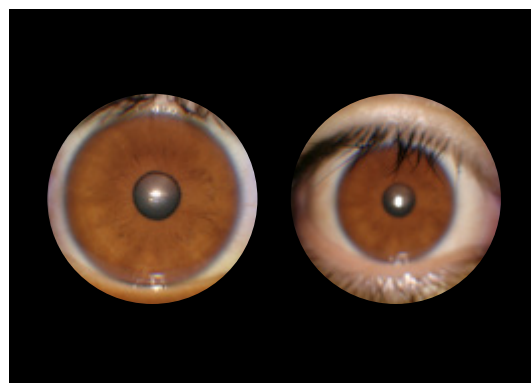


### EASE OF USE

Alignment, focusing, shooting and movement between the right and left eyes, are operated automatically with a single touch, making the NW500 easy to operate<sup>10</sup>. The need to recapture is reduced, even when taking pictures of eyes with small pupils, contributing to the overall efficiency of the fundus photography workflow.



The manual mode is used for external photography. The camera will switch to the shooting screen without auto-alignment or auto-focus. While observing the live image displayed on the monitor, it is possible to capture any area, including the pupil, iris, conjunctiva etc.<sup>11</sup>



8. Performed on the monitor screen or IMAGENet® 6

9. Glasses for stereo viewing are not included

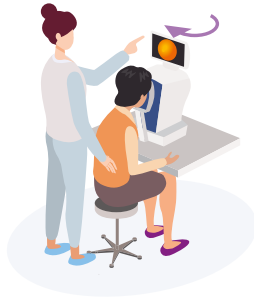
10. If the auto-shoot setting is turned on.

11. The intended use of manual photography mode is to capture the eye's appearance as a reference. It is not intended for diagnosis.

# FEATURES

## SPACE-SAVING

The touch panel monitor offers 360 degrees of rotation, giving the operator the flexibility to capture fundus photography from any position. The small footprint of the device means it can be installed virtually anywhere, allowing for optimal use of the examination room.



BACK



SIDE

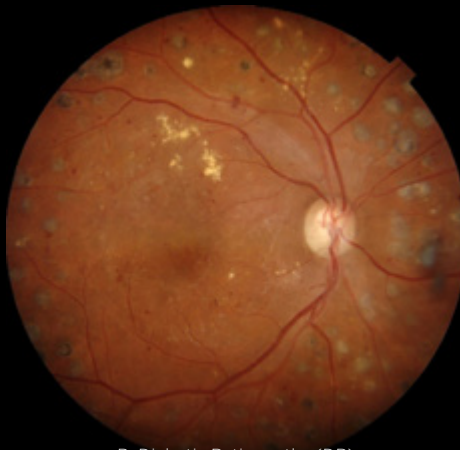


FRONT

## CASE IMAGES



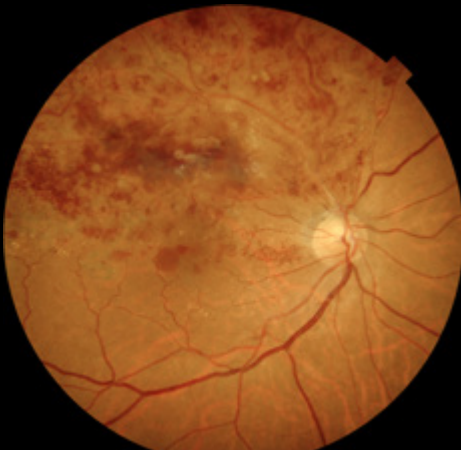
A. Glaucoma



B. Diabetic Retinopathy (DR)



C. Retinal Haemorrhage



D. Branch Retinal Vein Occlusion



E. Central Serous Chorioretinopathy

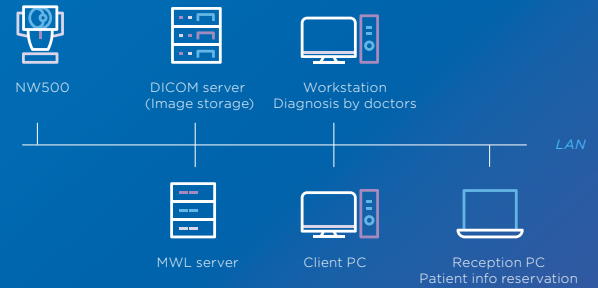


F. Epiretinal Membrane

# CONNECTIVITY

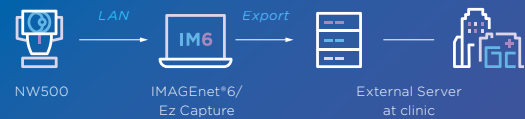
## DIRECT DICOM

NW500 is DICOM compliant, making it easy to integrate with PACS and EMR programs.



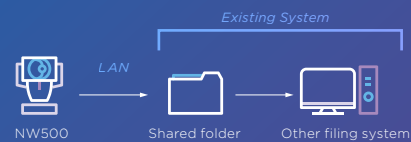
## EZ CAPTURE/ IMAGENET®6

Ez Capture is standard capture software. NW500 also saves digital images to IMAGENet® 6.



## SHARED FOLDER

Save images directly to a shared folder on a network. Using a shared folder, third-party software, such as diagnostic AI, can retrieve images from NW500 and save them to their software.



## DIRECT STORAGE

Direct storage is the simplest configuration and does not require an external PC. Convenient for mobile stations or when a network is not being used.

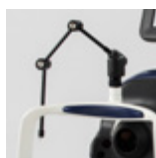


## SPECIFICATIONS

ANGULAR FIELD OF VIEW	50°
OPERATING DISTANCE	35.5mm
PUPIL DIAMETER FOR PHOTOGRAPHY	Normal : $\phi$ 2.5mm or higher Small pupil: $\phi$ 2.0mm or higher (confirmed with model eyes)
RESOLVING POWER ON FUNDUS	Colour image-capturing <ul style="list-style-type: none"> <li>Centre: 60 lp/mm or higher</li> <li>Middle (r/2): 40 lp/mm or higher</li> <li>Periphery (r): 25 lp/mm or higher</li> </ul>
MEASURING RANGE FOR THE DIOPTRIC POWER OF THE PATIENT'S EYE	-33D to +40D -13D to +12D (when used without diopter correction lens) -33D to -12D (when used with the minus diopter correction lens) +11D to +40D (when used with the plus diopter correction lens)
INTERNAL FIXATION TARGET	OLED The display method is adjustable: <ul style="list-style-type: none"> <li>Positions</li> <li>Steady light/blinking light</li> <li>Blinking speed</li> <li>Brightness</li> <li>Shapes</li> </ul>
EXTERNAL FIXATION TARGET	LED
AUXILIARY FUNCTIONS FOR PHOTOGRAPHY	<ul style="list-style-type: none"> <li>Auto-alignment</li> <li>Auto-focus (usable only when used without diopter correction lens)</li> <li>Auto-shoot (usable only when used without diopter correction lens)</li> <li>Auto-small pupil (usable only when used without diopter correction lens)</li> </ul>
POWER SOURCE	
Source voltage	AC100-240V
Power input	70-120VA
Frequency	50-60Hz
DIMENSIONS AND WEIGHT	
Dimensions	332-426mm (W) x 540-680mm (D) x 519-769mm (H)
Weight	20kg

**NOTE :** In this product, 12MP digital camera is used.

## OPTIONAL ACCESSORY



External fixation target  
**EF-2**

**TOPCON CORPORATION**  
75-1 Hasunuma-cho, Itabashi-ku, Tokyo 174-8580, JAPAN.  
Phone: +81-(0)3-3558-2522/2502 Fax: +81-(0)3-3965-6898  
www.topconhealthcare.jp

**RIMC D.O.O.**  
Pot na Polšco 75  
8270 KRŠKO  
SLOVENIJA  
Tel.: +386 7 49 05 200  
E-mail: info@rimc.net  
www.rimc.net

**PROS LOGISTIC D.O.O.**  
Ulica Crvenog križa 31  
10000 ZAGREB  
HRVATSKA  
Tel.: +385 99 444 2222  
E-mail: info@prosinecki.com  
www.prosinecki.com

**D.O.O. EUROOPTIC**  
Kosmajaska br. 9  
21460 VRBAS  
SRBIJA  
Tel.: +381 63 541 221  
E-mail: topcon.srb@gmail.com  
www.topcon.rs



**IMPORTANT** In order to obtain the best results with this instrument, please be sure to review all user instructions prior to operation.

Not all products, services or offers are approved or offered in every market, and products vary from one country to another.  
Contact your local distributor for country-specific information and availability.

©2023Topcon Corporation | M000098E-3 | The product is in conformity with Regulation EU 2017/745 on medical devices (MDR)

