

NEW Digital Slit Lamp

First Choice for Professionals

Coming
Soon

SL-D701 Slit Lamp

Features

- » Offers LED / Halogen Type Models
- » Higher Contrast Images Available
 - Due to the newly adopted Topcon original digital camera DC-4
- » Auto Exposure
 - The color of the live image and the captured image turn out to be very similar thanks to the automatic exposure adjustment. You will no longer be troubled with the brightness gap between the live and captured images.
- » Versatile Filters All Come as Standard
 - Amber Filter
 - Blue Free Filter System
 - Meibomian glands observation available*
- » Multiple Shooting Function
 - Assists an operator to obtain an exact image by automatically saving images even few seconds before the operator starts pressing the control lever
- » IMAGEnetTM System (option)



Coming
Soon

DC-4
Digital Camera

* With a combination of SL-D701 + DC-4 + BG-5

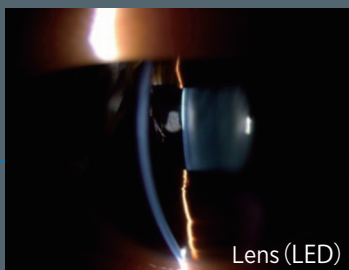


Compact, Stylish, High Quality NEW Digital Camera

Coming Soon **DC-4**

Cornea / Iris / Tarsus / Lens / Angle Observation

SL-D701 equips all the necessary functions that professionals desire. The image magnification can be changed by five steps up to 40x.



Meibomian Glands

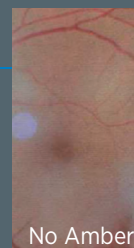
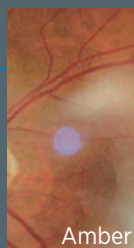
Non-contact meibography is available by using background illumination system*.

*With a combination of SL-D701 + DC-4 + BG-5



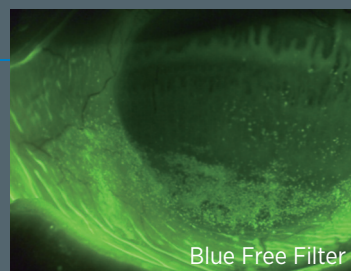
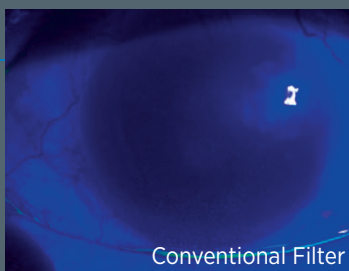
Amber Filter

Amber filter will improve the contrast and color depth of the images, resulting in a superior observation of vessels.



Blue Free Filter System

The optional filters combination enables the particular to obtain superb fluorescein images and videos. The left image shows the result that can be obtained with conventional cobalt blue illumination. The right image indicates the superior image that is achieved when the fluorescein observation filters combination is used.



DEVICE TECHNOLOGIES AUSTRALIA

Unit 8/25, Frenchs Forest Road East, Frenchs Forest,
NSW 2086, Australia
P: 1800 811 513 E: customers@device.com.au
W: www.device.com.au

TOPCON CORPORATION

75-1 Hasunuma-cho, Itabashi-ku, Tokyo 174-8580, Japan.
Phone: 3-3558-2523/2522 Fax: 3-3965-6898 www.topcon.co.jp

* Subject to change in design and/or specifications without advanced notice.



※Pending inclusion on the ARTG

© 2013 TOPCON CORPORATION All Rights Reserved