

Specifications

ACP-8EM

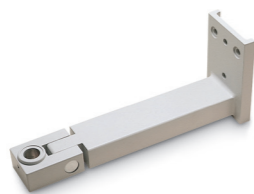
Refracting distance	3.0 to 6.1 m
Projection magnification	30x (in 5 m refraction)
Projection size	330x270 mm, Ø 300 mm
Number of charts	30
Chart change-over	1 frame / 0.03 sec
Number of masks	All versions: Open: 1, R&G: 1EM and MC: versions: Horizontal line: 5, vertical line: 5, vertical line: 8, single isolation: 21
Mask change-over	1 frame / 0.02 sec
Program step	2 type, max 30 steps available
Projection Lamp	12v 50w (halogen lamp)
Automatic Shut-off	After 10 min
Electricity	AC 120, 220, 230 or 240 V, 50/60 Hz
Power consumption	80 VA
Dimensions	226 (W) x 300 (D) x 245 (H) mm *Including base height
Weight	6.0 kgs
Charts availability	A B F IS
Masking	Yes
IR connection	Yes
Remote controlled	Yes

Standard accessories

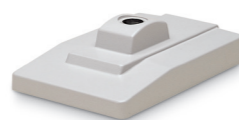


Projection metal screen
(21.7' x 17.7' with non-glare finish)

Optional accessories



Wall mount bracket



Base

IMPORTANT Subject to change in design and/or specifications without advanced notice.
In order to obtain the best results with this instrument, please be sure to review all user instructions prior to operation.



Topcon Europe Medical B.V.
Essebaan 11, 2908 LJ Capelle a/d IJssel, P.O. Box 145;
2900 AC Capelle a/d IJssel, The Netherlands
Phone: +31-(0)10-4585077; Fax: +31-(0)10-4585045
E-mail: medical@topcon.eu; www.topcon-medical.eu

Topcon España S.A.
HEAD OFFICE: Frederic Mompou, 4;
08960 Sant Just Desvern; Barcelona, Spain
Phone: +34-93-4734057; Fax: +34-93-4733932
E-mail: medica@topcon.es; www.topcon.es

Topcon Deutschland Medical GmbH
Hanns-Martin-Schleyer Strasse 41;
D-47877 Willich, Germany
Phone: (+49) 2154-885-0; Fax: (+49) 2154-885-177
E-mail: info@topcon-medical.de; www.topcon-medical.de

Topcon Ireland
Unit 276, Blanchardstown, Corporate Park 2
Ballycoolin, Dublin 15, Ireland
Phone: +353-18975900; Fax: +353-18293915
E-mail: medical@topcon.ie; www.topcon.ie

Topcon Danmark
Praestemarksvej 25, 4000 Roskilde, Danmark
Phone: +45-46-327500; Fax: +45-46-327555
E-mail: info@topcon.dk
www.topcon.dk

Topcon Italy
Viale dell'Industria 60;
20037 Paderno Dugnano, (MI) Italy
Phone: +39-02-9186671; Fax: +39-02-91081091
E-mail: info@topcon.it; www.topcon.it

Topcon Polska Sp. z o.o.
ul. Warszawska 25; 42-470 Siewierz; Poland
Phone: +48-(0)32-670-50-45; Fax: +48-(0)32-671-34-05
www.topcon-polska.pl

Topcon Scandinavia A.B.
Neongatan 2, P.O. Box 25; 43151 Mölndal, Sweden
Phone: +46-(0)31-7109200; Fax: +46-(0)31-7109249
E-mail: medical@topcon.se; www.topcon.se

Topcon France
BAT A1; 3 route de la révolte, 93206 Saint Denis Cedex
Phone: +33-(0)1-49212323; Fax: +33-(0)1-49212324
E-mail: topcon@topcon.fr; www.topcon-medical.fr

Topcon (Great Britain) Ltd.
Topcon House; Kennet Side; Bone Lane; Newbury
Berkshire RG14 5PX, United Kingdom
Phone: +44-(0)1635-551120; Fax: +44-(0)1635-551170
E-mail: medical@topcon.co.uk; www.topcon.co.uk

ACP-8EM

Auto chart projector



Versatile Quick Convenient Functional

The Topcon ACP-8EM Auto Chart Projector provide improved sharp and clear image projection and fast chart rotation.

A cordless remote controller allows instant projection of the 30 test charts at a rate of 0.03 seconds per frame.

In addition, the ACP-8EM Chart Projector offers 3x5 character charts with a wide projection size (330x270) for fast and efficient testing.



Connectivity with CV-5000

The ACP-8EM can be used as a stand alone set up, using a dedicated remote controller.

The ACP-8EM can be used as well in combination with a Topcon automated phoropter, the CV-5000. The CV-5000 can control the ACP-8EM chart projector directly, using the KB-50S controller or CV-software on an external PC. This combination allows the operator to use the ACP-8EM in a highly efficient way.



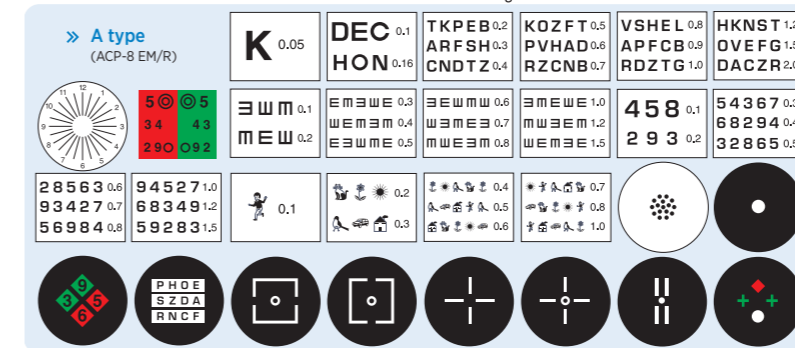
Program settings

The ACP-8EM can be programmed to project a specific sequence of charts for maximum flexibility and refraction ease.

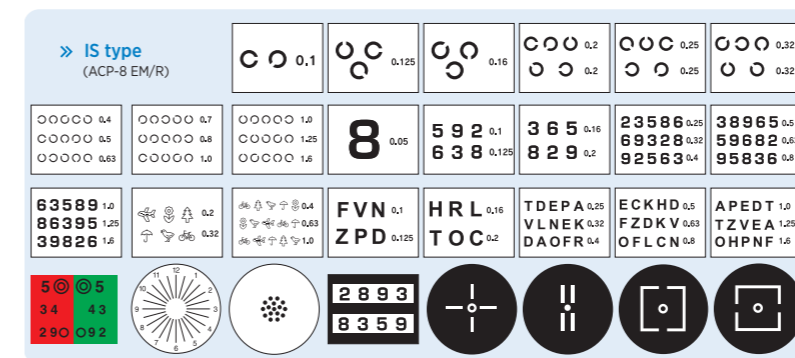
Single character masking

The versatile masking capabilities of the ACP-8EM allow projection of a single character at a time.

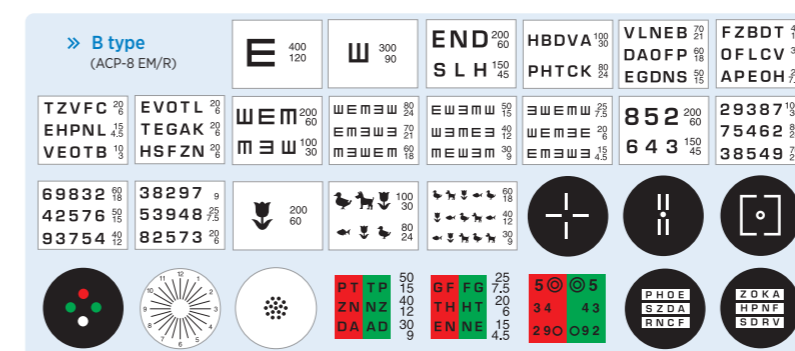
Different chart sets each offering a selection of 30 charts to cater for regional differences.



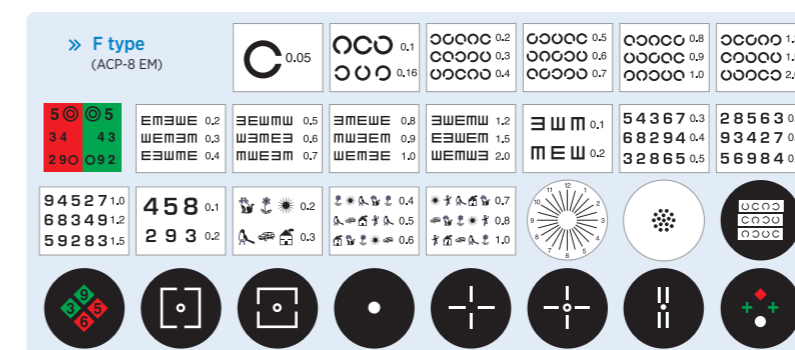
A type (ACP-8 EM)



IS type (ACP-8 EM)



B type (ACP-8 EM)



F type (ACP-8 EM)

Easy setup and maintenance

It is very easy to replace the bulb. You do not need to adjust the position and focus of the bulb after replacement.

Tilt function

The horizontal axis of the projector can be adjusted to guarantee a perfectly positioned projection on the screen.